

GEOTECH

60x120 cm | 23,6"x47,2" 90x90 cm | 35,4"x35,4" 60x60 cm | 23,6"x23,6"



GEOTECH | IVORY
90x90 cm | 35,4"x35,4"
MPRec9090

GEOTECH | IVORY
60x120 cm | 23,6"x47,2"
MPRec60120



GEOTECH | SAND
90x90 cm | 35,4"x35,4"
MPRec9090

GEOTECH | SAND
60x120 cm | 23,6"x47,2"
MPRec60120



GEOTECH | IVORY 2PLUS ESPESORADO
60x60 cm | 23,6"x23,6"
MPRec60602PLUS

GEOTECH | IVORY
60x60 cm | 23,6"x23,6"
MPRec6060



GEOTECH | SAND 2PLUS ESPESORADO
60x60 cm | 23,6"x23,6"
MPRec60602PLUS

GEOTECH | SAND
60x60 cm | 23,6"x23,6"
MPRec6060

GEOTECH

GEOTECH | LIGHT GREY
60x120 cm | 23.6"x47.2"



GEOTECH

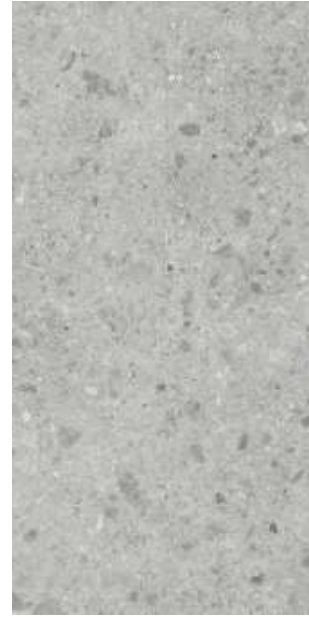
60x120 cm | 23,6"x47,2" 90x90 cm | 35,4"x35,4" 60x60 cm | 23,6"x23,6"



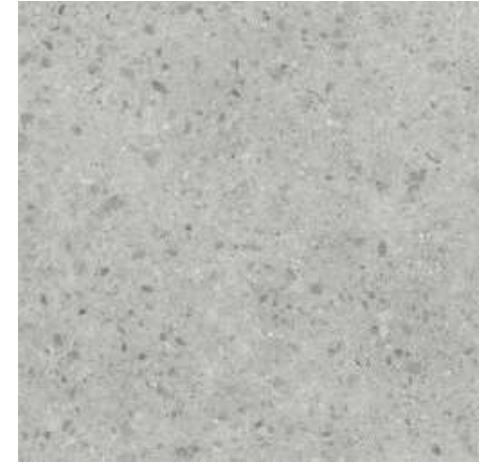
GEOTECH | LIGHT GREY
60x120 cm | 23,6"x47,2"
MPRec60120



GEOTECH | LIGHT GREY
90x90 cm | 35,4"x35,4"
MPRec9090



GEOTECH | GREY
60x120 cm | 23,6"x47,2"
MPRec60120



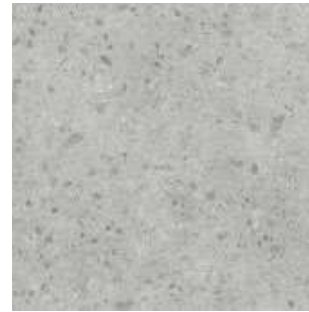
GEOTECH | GREY
90x90 cm | 35,4"x35,4"
MPRec9090



GEOTECH | LIGHT GREY
60x60 cm | 23,6"x23,6"
MPRec6060



GEOTECH | LIGHT GREY 2PLUS ESPESORADO
60x60 cm | 23,6"x23,6"
MPRec60602PLUS



GEOTECH | GREY
60x60 cm | 23,6"x23,6"
MPRec6060



GEOTECH | GREY 2PLUS ESPESORADO
60x60 cm | 23,6"x23,6"
MPRec60602PLUS

GEOTECH

GEOTECH | ANTHRACITE
90x90 cm | 35,4" x 35,4"

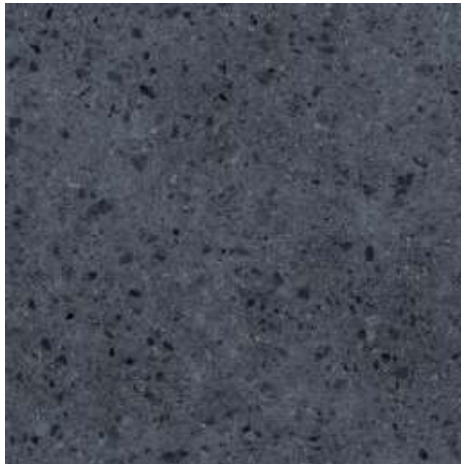


GEOTECH

60x120 cm | 23,6"x47,2" 90x90 cm | 35,4"x35,4" 60x60 cm | 23,6"x23,6"



GEOTECH | ANTHRACITE
60x120 cm | 23,6"x47,2"
MPRec60120



GEOTECH | ANTHRACITE
90x90 cm | 35,4"x35,4"
MPRec9090



GEOTECH | ANTHRACITE
60x60 cm | 23,6"x23,6"
MPRec6060



GEOTECH | ANTHRACITE 2PLUS ESPESORADO
60x60 cm | 23,6"x23,6"
MPRec60602PLUS



*En caso de colocación trabada, no superar 1/4 de la longitud de la pieza.
Do not exceed a quarter of the length of the tile in case of using an offset pattern.

PIEZAS COORDINADAS | COORDINATED PIECES



MANÁ | GREY
60x60 cm | 23,6"x23,6"
MPRec6060



MANÁ | COLORS
60x60 cm | 23,6"x23,6"
MPRec6060



CREA | GREY
60x60 cm | 23,6"x23,6"
MPRec6060



CREA | COLORS
60x60 cm | 23,6"x23,6"
MPRec6060

PIEZAS ESPECIALES | SPECIAL PIECES



GEOTECH | RODAPIÉ
7,5x60 cm | 2,9"x23,6" PZRod760Romo
8x75 cm | 3,1"x29,5" PZRod875Romo
8x90 cm | 3,1"x35,4" PZRod890Romo



GEOTECH | PELDAÑO ROMO
30x60 cm | 11,8"x23,6" PZPel3060Romo
30x90 cm | 11,8"x35,4" PZPel3090Romo
30x120 cm | 11,8"x59" PZPel30150Romo



GEOTECH | PELDAÑO GRADONE
30x60 cm | 11,8"x23,6" PZPel3060Gradone
30x90 cm | 11,8"x35,4" PZPel3090Gradone
30x120 cm | 11,8"x59" PZPel30150Gradone



MALLA 55
30x30 cm | 11,8"x11,8"
PZMsc303055



MALLA HEXA
30x30 cm | 11,8"x11,8"
PZMsc3030Hexa



MALLA MURETO
30x60 cm | 11,8"x23,6"
PZMsc3060Mureto



FORMATO / SIZE	Box			Pallet		
	Nº Pieza / Tiles	M²	Kg	Nº Cajas / Boxes	M²	Kg
60x60 23,6"x23,6"	3	1,080	24	40	43,2	960
90x90 35,4"x35,4"	2	1,620	42	20	32,4	870
60x120 23,6"x47,2"	2	1,440	27,5	30	43,2	1.075
2 PLUS 60x60 23,6"x23,6"	2	0,74	33,5	30	22,2	1.020